

FREE

Discover DELAWARE COUNTY

Fun

Adventure

Relaxation

AND MORE!

Benefit
State Park
Lake Friends Group



www.delawarecountyiowatourism.com

2023-24

Delaware County Tourism

**ACTIVITY
GUIDE**



Enjoy a pint in Iowa's oldest building that houses a brewery!

Experience a variety of handcrafted ales and lagers in this neighborhood brewery and tap house.

**116 South Franklin St
Manchester, IA 52057
(563) 927-2722**

FRANKLINSTREETBREWING.COM

adno-328050



**COLESBURG
DELAWARE
DELHI
DUNDEE
EARLVILLE
EDGEWOOD**

**GREELEY
HOPKINTON
MANCHESTER
MASONVILLE
RYAN**



The Delaware County Economic Development Commission (DCED) is a nonprofit economic development commission that serves ALL citizens of Delaware County by creating/retaining jobs, stimulating local economic growth and enhancing quality of life.

The Strategies by which we will accomplish our mission:

- Expansion / retention of existing business and industry
- Recruitment of new business and industry
- Value-Added Ag Initiatives
- Assist existing and future businesses in meeting their workforce needs.
- Providing technical assistance to the communities in Delaware County
- Entrepreneurship development
- Foundation for the Future of Delaware County
- Tourism
- Legislative advocacy to promote economic development



DONNA BOSS, Executive Director

Phone: 563-927-3325

Email: dboss@delawarecountyia.com

200 E. Main Street Manchester, IA 52057

adno-328074



Welcome to **DELAWARE COUNTY**

Cover photo by Broken Bow Photography Manchester, Iowa

Welcome



I would like to extend a warm, Midwest welcome to Delaware County and thank you for being here. If you are here on business, vacation, or have lived here for years, we are excited for you to experience Northeast Iowa and all it has to offer.

Delaware County is known for its natural beauty - bustling agriculture, pristine rivers, and scenic parks. The Maquoketa River provides breathtaking views and endless activities including the thrilling Manchester Whitewater Park, which offers many memories to families and friends alike. Take in the fresh air and trail views of Backbone State Park, or stroll through the history of Delaware County by visiting the numerous museums and memorials. There is truly something for everyone.

Whether you're visiting for the thrilling Delaware County Fair held each July, or looking for a cozy Airbnb to disconnect on Lake Delhi, we hope to provide you with memories that last a lifetime, educate you on our history and heritage, and immerse you in this place we proudly call home.

#thisisdelco

Safe Travels and we'll see you soon!

Maggie Sommers, Delaware County Tourism Director

For our 2023 Calendar of Events, please visit www.delawarecountyiowatourism.com

**LET US MAKE YOUR
ADVENTURE
HAPPEN!**

**Delaware County, Iowa
TOURISM**

563-927-3325

WWW.DELAWARECOUNTYIOWATOURISM.COM

MAGGIE SOMMERS
Delaware County
Tourism Director

**200 E. Main Street,
Manchester, IA 52057**

delawarecountytourism.com

adno=328067



Hello Spring

Farmers Market returns

Story by Mike Putz

There just might be something for everyone at the Manchester Farmers Market. The summer staple returns Saturday, May 27 and will run every Saturday from 7:30 to 11 a.m. until Saturday, Oct. 7.

With over a dozen vendors each week, market visitors may find fresh seasonal produce, fresh eggs, coffees, flowers, baked goods, arts and crafts and the occasional food truck.

Three Friday night farmers markets are scheduled for Friday, June 2, July 7 and Aug. 4. Friday night markets will run 5 to 9 p.m. and will feature live music in addition to vendors.

The farmers market is located behind A Bushel & a Peck on River Street and is held rain or shine.

Information on the markets may be found at the Manchester Area Chamber of Commerce by calling 927-4141 or on the Facebook page Manchester Farmers Market. ■

mike.putz@wcinet.com



CONTRIBUTED PHOTO

Fresh garden produce can be found at the Manchester Farmers Market.

Posy Place Floral & Gifts
We're Open To Brighten Your Day!
 613 E. Main • Manchester
 563-927-2011
 Mon.-Fri. 8:30-5:00, Sat. 8:30-Noon
YOUR FULL SERVICE FLORIST FOR OVER 30 YEARS!
It's Always A Beautiful Day At The Posy Place!
www.flowerstheposyplace.com

COMMUNITY INSURANCE OF IOWA
Delhi Insurance Agency
 Larry Hillers
 Kristi Conry & Dave Kruse
 Trusted Choice
 P.O. Box 205,
 Delhi, IA 52223
 Office: 563 922-2555
 1-800-657-8091 • Fax: 563-922-2492

DÉCOR & FASHIONS
for every style & season

MANCHESTER REAL DEALS

CLOCKS • SEASONAL • MIRRORS • WALL ART
TOPS • DRESSES • JEWELRY • JEANS & MORE!

Woman's Clothing in sizes Small - 3X

Find a unique gift,
the perfect outfit
& so much more!

SHOP ANYTIME AT:
manchester.realdeals.net
WE SHIP!

Wednesday 10-5; Thursday 10-6; Friday 10-5; Saturday 10-3
935 E. MAIN ST. MANCHESTER | (563) 822-1426 | REALDEALS.NET/MANCHESTER

adno=328065

HART RIDGE
GOLF COURSE
& DRIVING RANGE
Est. 1989

**1645 195TH ST.,
MANCHESTER
(563) 927-5494**

Visit Us On Facebook

**9 HOLE PUBLIC GOLF COURSE
& LIGHTED DRIVING RANGE!**

GET YOUR SEASON PASSES TODAY!

**OPEN DAILY FOR LUNCH!
NIGHTLY DINNER SPECIALS
FULL SERVICE BAR**

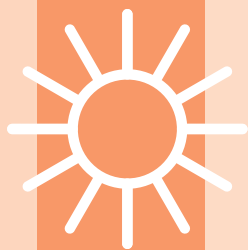
adno=328895

Regional Medical Center

Allergy	Medical/Surgical/Intensive Care	Public Health	REGIONAL FAMILY HEALTH Family Practice & OB Manchester Dyersville Edgewood Hopkinton Strawberry Point Winthrop
Audiology & Hearing Aids	Nephrology	Pulmonology	
Behavioral Services	Neurology	Radiology	
Cardiac Rehabilitation	Nutrition Education & Counseling	Respiratory Care	
Cardiology	OB/GYN	Senior Life Solutions	
Dermatology	OB & Family Health	Skilled Care	
Diabetes Management	Occupational Health	Sleep Study	
Ear, Nose & Throat (ENT)	Occupational Therapy	Specialty Clinic	
Emergency Services	Oncology	Speech Therapy	
Family Practice	Ophthalmology	Surgery	
General Surgery	Orthopedic	Urgent Care	URGENT CARE Walk-in service for patients who need to be seen within 24 hours but are NOT experiencing a medical emergency.
Home Care	Pain Management Clinic	Urology	
Infusions, Injections & Procedures	Parent Education & Support	Wellness Center	
Laboratory	Physical Therapy	Wound Clinic	
Massage Therapy	Podiatry		

Regional Family Health-Manchester
Monday-Friday: 12-7PM
Saturday-Sunday: 8AM-1PM

709 W MAIN ST, MANCHESTER | 563-927-3232 | REGMEDCTR.ORG



Hello Summer

Civil War Days returns

Story by **Daniel Charland**



CONTRIBUTED PHOTOS

The Galena Generals stand at attention during the flag raising.

Civil War Days is returning to Hopkinton June 3-4. This reenactment by the Delaware County Historical Society is a three-day event honoring and educating the public about the Civil War, often with a theme focusing on a different aspect of the war.

James Hucker, vice president of the Delaware County Historical Society, said the goal of Civil War Days is to give the community a chance to see the museum and its connection with the Civil War, the former Lenox College, which centers the museum complex.

"When the Civil War broke out, the Union was looking for soldiers," said Hucker, "so the president of the college and all but a couple of male students volunteered to enlist and fought in the war. Of all the men who fought, a quarter of them didn't make it home. Their names, and other names of people from the Hopkinton area, are on the monument in the center of the complex."

This year's Civil War Days is the second since the event was reinstated last year, after a 20-year hiatus. While the celebration was started in the early 1970s and ran until the early 2000s, it was set aside during Hopkinton's sesquicentennial celebration and didn't begin again until being brought back for the 50th anniversary of the first Civil War Days. According

to Hucker, the Museum Board wanted to return an element of local culture and the anniversary was the perfect time to do so.

The centerpiece attraction will be a battle reenactment Saturday, June 3 and a skirmish reenactment Sunday, June 4. Other features include period-appropriate kids' activities, live demonstrations of historical trades and portrayals of historical figures. Food and live music will be provided, as well as a pie-eating contest and a church service at the Reformed Presbyterian Church on the college complex.

This year's theme is Wartime Women and will feature a presentation about a Lenox College alumni, Mary Walker, the only female to win the Medal of Honor. Walker will be portrayed by an actor giving a speech about her life and war service. The Wartime Women theme will also be shared through special displays.

Hucker said many reenactors are returning from last year to take part in the battles. While a handful of them are local, many come from all over the Midwest.

"We're ecstatic to have a lot of our reenactors back from last year. All of them are volunteer reenactors who do this as a hobby because of their love of history and wanting to carry on the reenactment tradition, which is a bit of a dying art."

Outside of Civil War Days, the Delaware County Historical Society is open Memorial Day through Labor Day Tuesday through Sunday 1:00-4:00 pm. For more information, visit their website at <https://dchsia.org>. ■

daniel.charland@wcinet.com



CONTRIBUTED PHOTOS

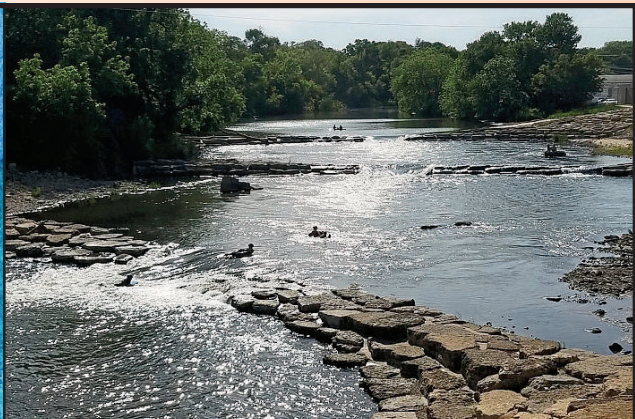
Confederate reenactors reloading at the reenactment.

Iowa's Largest White Water Park

Kayaking - Fishing - Tubing

www.manchester-ia.org

563.927.3636



 [facebook.com/Manchester White Water Park](https://facebook.com/ManchesterWhiteWaterPark)



MONDAY, JULY 10



PARADE &
FREE INFLATABLES

TUESDAY, JULY 11



ATV/UTV/
GOLF CART
RACES

2023 DELAWARE COUNTY FAIR

WEDNESDAY, JULY 12

AMATEUR TOUGH TRUCK RACES



**JOSH
BALDWIN,**
CHRISTIAN
ARTIST

THURSDAY, JULY 13

REO SPEEDWAGON



FRIDAY, JULY 14

**COUNTRY
CONCERT TBA**



SATURDAY, JULY 15

DRAFT HORSE SHOW
TRUCK & TRACTOR PULL



SUNDAY, JULY 16

DRAFT
HORSE
SHOW AND
DEMO
DERBY



WWW.DELAWARECOFAIR.COM • FREE CARNIVAL RIDES • MANCHESTER, IA



Hello Summer

New art installed at Manchester Fish Hatchery



The mural on the water tower at the Manchester Fish Hatchery features a scene of a local stream with native fish.



CONTRIBUTED PHOTOS

Trout await their release into county streams.

The Maquoketa River Watershed Management Authority, through an Iowa DNR watershed management planning grant, enlisted the help of the University of Iowa's Initiative for Sustainable Communities (IISC) program to create the mural spanning three sides of the water tower at the Manchester Fish Hatchery. The newly formed Friends of the Manchester Fish Hatchery Group helped fund the surface preparation of the tower for the installation.

The original seven large panels were painted by two University of Iowa (UI) art students, Lachlan Hinwood and Sean Tyler, as they worked toward their Masters of Fine Arts in the School of Art and Art History.

The panels were painted inside the UI art

building to minimize outside disturbances while in progress over the summer, then brought to the hatchery for storage while the water tower was prepped for the installation last fall.

The mural features a detailed outline of the entire Maquoketa River watershed, a scene of a local stream with native fish, streamside vegetation and other aquatic life and an area for hatchery visitors to take a selfie showing their location at the hatchery.

The fish hatchery grounds are open from sunrise to sunset daily. Tours are self-guided around the exterior raceways of trout. Office hours are by appointment.

The Manchester Fish Hatchery is located at 22693 205th Ave. ■

2023 Season Golf Pass \$150

UNLIMITED GOLF IN 2023

Not available to past or present members.

Backbone Golf & Country Club Strawberry Point
Clubhouse 563-933-4545

Rhubacue *on the River* Reimagined

Story by Erin LaBelle



Rhubacue on the River has been reimagined into Manchester River Days, a longer, more inclusive river-centric event. The Rhubarb lovers' legacy will be carried forward while matching it with BBQ, another summertime favorite.

The Manchester Area Chamber of Commerce (MACC) made the decision during its strategic planning session with the goal of drawing more people to the city during the first weekend in June. According to Executive Director Dave Wakefield, the group felt Rhubacue on the River had met its potential and served the community well over the years, but all agreed, it was time for a change.

The well-loved Rhubarb contests will remain and, per request, be moved into a shadier area. The Largest Leaf and Longest Stalk, as well as food competitions like Rhubarb Crisp, will become part of the new event.

Music on the Maquoketa will kick off Manchester River Days Thursday at 6 p.m. First Friday Farmers Market, food trucks and an outdoor market along the river will follow Friday evening starting at 5 p.m.

"Saturday isn't clear yet, but we have a lot of ideas — we want to use the river, so we may have a float parade. It will be a river-centric day," said Wakefield. "We want to go out with a bang." Kids' activities will take place on Saturday morning, but the rest of the day's schedule will be revealed soon.

Hughes Memorial Trust (HMT) is sponsoring a free concert, with sandwiches. Building community connections and offering opportunities for neighbors to engage with each other is part of HMT's mission, making them the perfect partner for MACC in this endeavor.



CONTRIBUTED PHOTO

Music on the Maquoketa will kick off Manchester River Days.

"We're inviting businesses and residents to participate and offer ideas," said Wakefield. "We want to show the best Manchester has to offer, while also celebrating the river."

The committee hopes to offer an educational component connecting people more deeply to the river and the natural area surrounding it.

The event will be completely free other than a 5K registration fee and purchases from vendors or food trucks. Triple Threat will be the musical entertainment Friday night and the city has not yet announced the performer for Thursday evening. Up-to-date info can be found on the Manchester Area Chamber of Commerce website. ■

erin.labelle@wcinet.com

The ONLY Full Service Marina on Lake Delhi

- Sales •Service
- Bait/Tackle
- Rentals •Gas
- Accessories
- ATV Service and Repair

Your local Mercury dealer

HARTWICK MARINA

LAKE DELHI, IA • 563-922-2772

www.hartwickmarina.com

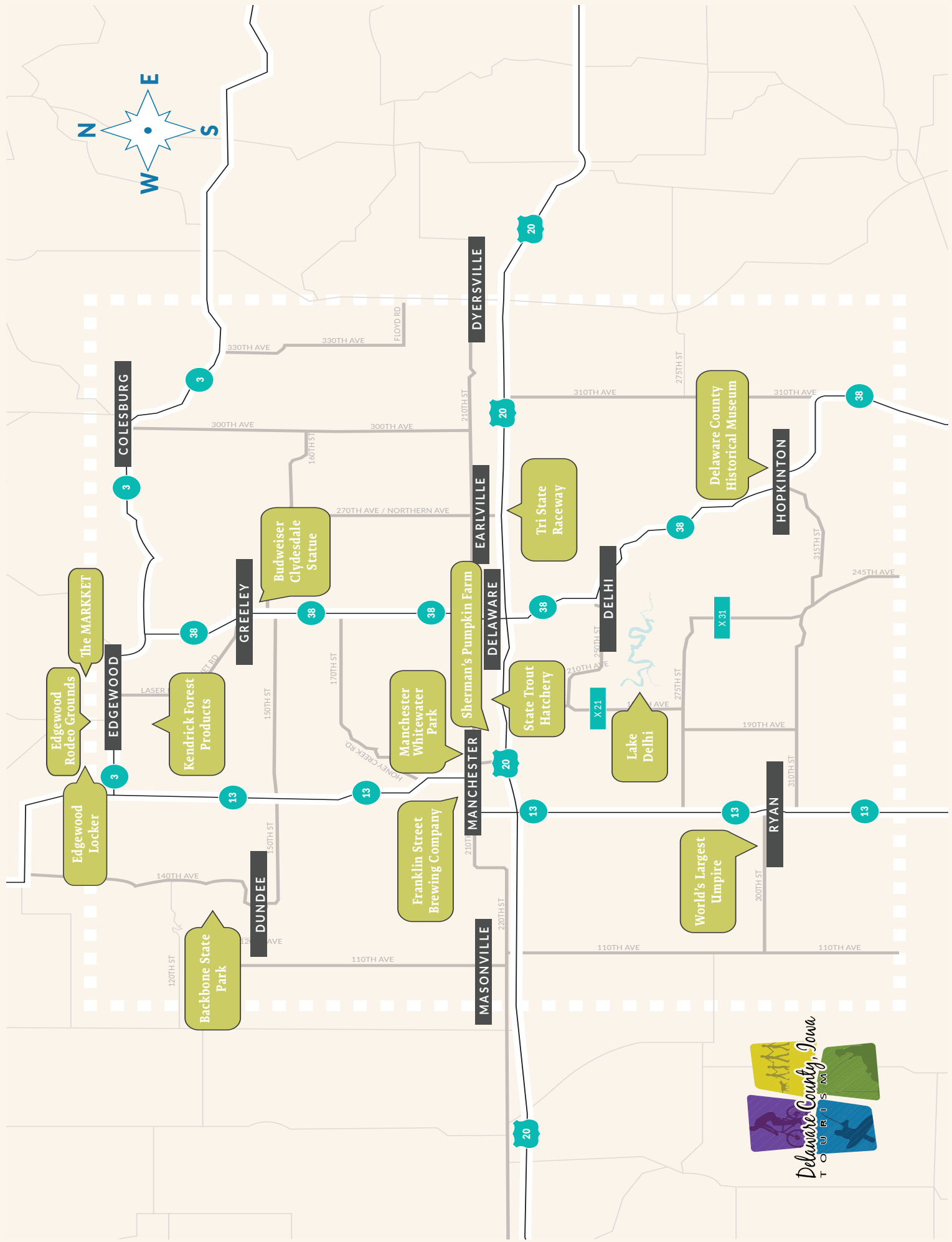
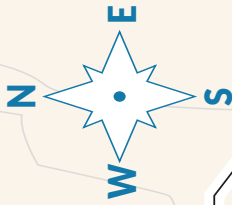
Cork 'N' Bottle has everything you need while Visiting Delaware County!

Firewood for your campfire
Propane for the Grill
 Several brands of **Beer**
Wine of all kinds • Spirits you love
Stop in and check us out!

CALL AHEAD For All Your Special Events!
Your locally owned liquor store & more!

CORK 'N' BOTTLE

900 E. Main St., Manchester, IA • 563-927-6911



COLESBURG

- 1 THE HOSTA LEAF
- 2 TWIN BRIDGES PARK
- 3 LONE PINE GOLF & COUNTRY CLUB
- 4 HILL COUNTRY CONVENIENCE STORE
- 5 THE HUB
- 6 J R WILLIES

DELAWARE

- 7 DELAWARE SPEEDWAY
- 8 GARY'S LIQUOR & WINE

DELHI

- 9 AMISH STORES
- 10 BIG G CAMPGROUNDS
- 11 DELHI GUEST HOUSE
- 12 OFF THE HOOF
- 13 SILVER LAKE PARK
- 14 TURTLE CREEK PARK
- 15 LAKE DELHI
- 16 PUTTIN' A-ROUND MINI GOLF COURSE
- 17 DELHI LANDING
- 18 SMOKEY'S LOST BAR & GRILL
- 19 THE PIZZA PLACE
- 20 HARTWICK MARINA
- 21 ROAST & TOAST

DUNDEE

- 22 DELAWARE COUNTY FREEDOM ROCK SITE
- 23 BACKBONE STATE PARK
- 24 DUNDEE BAR & GRILL
- 25 IOWA MAKER'S

EARLVILLE

- 26 DOLLAR GENERAL
- 27 TRI-STATE RACEWAY
- 28 MARSHALL'S PUBLIC HOUSE
- 29 DAN'S EARLVILLE LOCKER

EDGEWOOD

- 30 EDGEWOOD CHAMBER OF COMMERCE
- 31 EDGEWOOD MUSEUM
- 32 EDGEWOOD PRO ROOF-ROCKS TOURS
- 33 KENDRICK FOREST PRODUCT TOURS
- 34 CAFE ROSE GUEST SUITES
- 35 BIRBY STATE PARK
- 36 SWEET DREAMS CAMPGROUND
- 37 WOODS EDGE GOLF COURSE
- 38 AUNT NEECEE'S PIZZA
- 39 CAFE ROSE
- 40 FRANNY'S BAR & GRILL
- 41 HALL-LOFT
- 42 BLOOMING FLOWERS, GIFTS & MORE
- 43 DOLLAR GENERAL
- 44 EDGEWOOD LOCKER
- 45 EDGEWOOD SIGNS & DESIGNS
- 46 EDGEWOOD
- 47 HALL-LOFT & MY ADDICTION BOUTIQUE
- 48 HALLWORKS
- 49 KARL'S GROCERY
- 50 PRESTIGE DAY SPA & BOUTIQUE
- 51 THE MARKET
- 52 STEEL MAGNOLIA'S SALON, SPA & SANCTUARY LLC
- 53 EDGEWOOD EVENT CENTER

GREELEY

- 54 BUDWEISER CYCLES DALE STATUE
- 55 FOUNTAIN SPRINGS PARK

HOPKINTON

- 56 DELAWARE COUNTY HISTORICAL MUSEUM
- 57 DELAWARE CROSSING SCENIC BYWAY (START)
- 58 TIPPERARY FIBER ART STUDIO
- 59 DUNLAP PARK
- 60 POOLSIDE PARK
- 61 SHOWROOM LOUNGE
- 62 THE DEPOT ON MAIN
- 63 THE NOT SO TINY HOUSE

RYAN

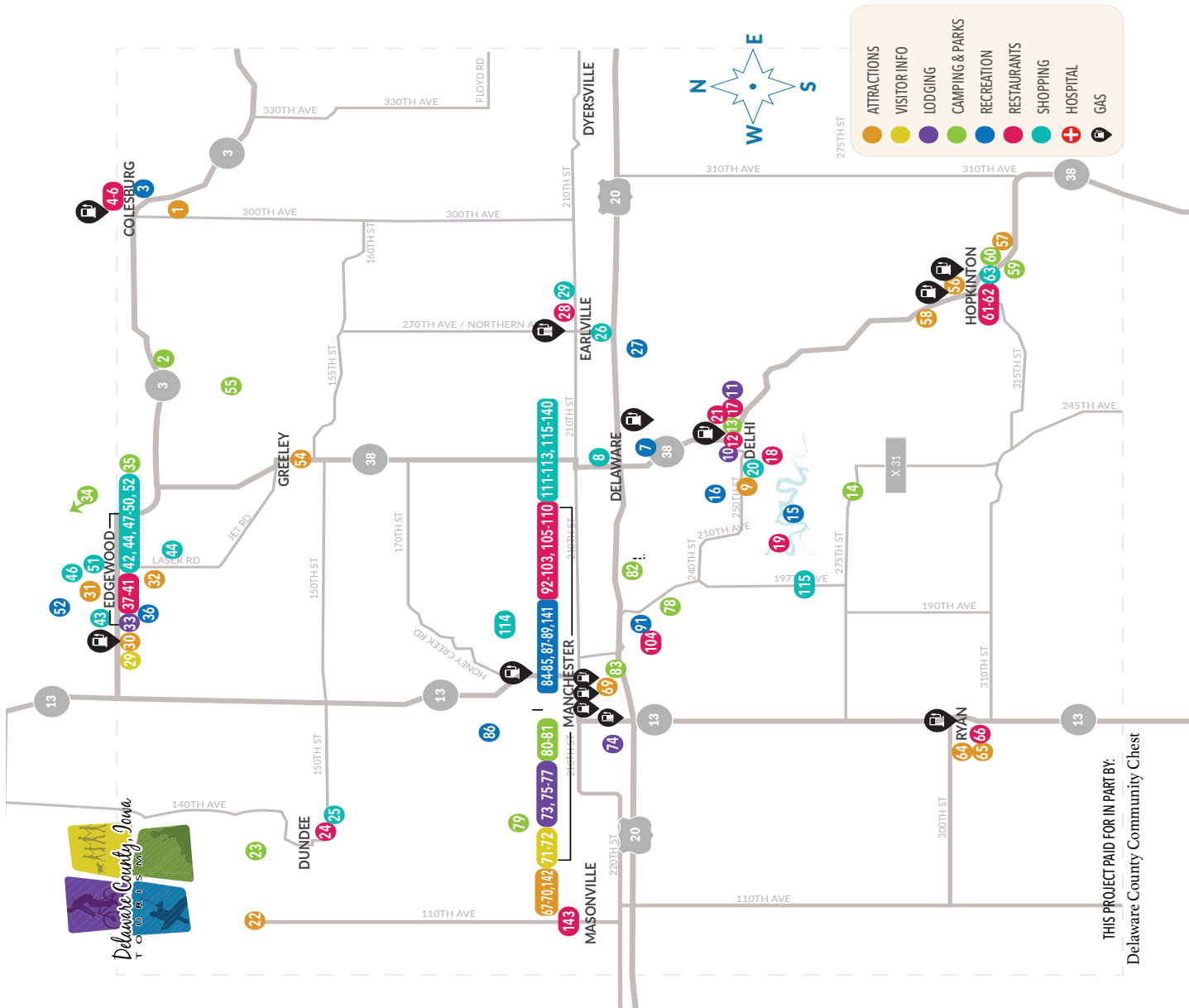
- 64 WORLD'S LARGEST UMPIRE
- 65 VETERAN'S MEMORIAL PARK
- 66 COOPER'S PLACE

MANCHESTER

- 67 BARN OUTLETS OF DELAWARE COUNTY
- 68 COSTI THE DRY
- 69 CHENOWETH'S PUMPKIN FARM & CORN MAZE
- 70 TRAVELER'S TOYS & FARM MACHINERY MUSEUM
- 71 DELAWARE COUNTY TOURISM
- 72 WHITEWATER PARK RESTROOMS, PARKING & KIOSKS
- 73 SUPE STAR BY BEST WESTERN
- 74 COBBLESTONE INN & SUITES
- 75 DAYS INN
- 76 MAPLES ON MADISON
- 77 SISTER HILL INN & EVENTS
- 78 BAILEY'S FORD PARK
- 79 COFFIN'S GROVE PARK
- 80 DELAWARE COUNTY FAIRGROUNDS
- 81 HELEN SHELLY MEMORIAL PARK
- 82 LAZY T CAMPGROUND
- 83 SCHRAM PARK
- 84 BECKMAN SPORTS COMPLEX
- 85 CAPTAIN & TENILLE'S BOWLING & RESTAURANT
- 86 HART RIDGE GOLF COURSE & DRIVING RANGE
- 87 LEGACY SKATE PARK
- 88 MANCHESTER FAMILY AQUATIC CENTER
- 89 MANCHESTER TROUT HATCHERY
- 90 MANCHESTER WHITEWATER PARK
- 91 PIN OAK GOLF COURSE
- 92 APRIL'S DOWNTOWN DINER
- 93 ARCTIC FUSION
- 94 AUNT EMMY'S
- 95 BLUE COLLAR SPORTS BAR
- 96 BURGER KING
- 97 BUSH & A PECK
- 98 CHUONG GARDEN CHINESE RESTAURANT
- 99 DAIRY QUEEN
- 100 FIESTA CANTON
- 101 FRANKLIN STREET BREWING COMPANY
- 102 HARDEE'S
- 103 OLIVE THAT DELI
- 104 PIN OAK PUB & LINKS
- 105 PIZZA RANCH
- 106 RIVER BEND PUB & GRILL
- 107 SUBWAY
- 108 SUNSET FAMILY RESTAURANT
- 109 THE BREAD BASKET
- 110 WIDNER DRUG STORE'S 1950'S ICE CREAM PARLOR
- 111 SK SPORTS & MORE
- 112 BRIDES & WEDDINGS
- 113 CAMP COURAGEOUS GARAGE SALE
- 114 CHILD'S PLAY LANDSCAPING & GARDEN CENTER
- 115 CORCORAN FURNITURE
- 116 CORK NEOTILE
- 117 DOLLAR GENERAL
- 118 DON'S APPLIANCE
- 119 AREWAY
- 120 FINER
- 121 GATEWAY APPLIANCE
- 122 HEIMS AWARDS & CUSTOM GIFTS
- 123 HONEY CREEK FURNITURE
- 124 LAKE DESIGN & DECOR
- 125 LAURIN'S KEEPSHAKES
- 126 LEBEACH BUN TRADING & GIFTS
- 127 MOUNTAIN VIEW
- 128 MOUNTAIN VIEW SCREEN PRIMS
- 129 MURPHY'S FARM FLEET
- 130 NOTORIOUS GIFTS
- 131 PALMER JARDINIERE
- 132 FULL DEALS ON HOME DECOR
- 133 STEVE'S FLOWERS & GARDEN CENTER
- 134 THE POSY PLACE GIFTS & FLORAL
- 135 THE QUILTMAKER'S SHOPPE
- 136 THE WATERSHED
- 137 THOMPSON SHOES
- 138 TREASURE ALLEY & TREASURE ALLEY (TOO!)
- 139 WALMART
- 140 WIDNER GIFT SHOPPE
- 141 THE GATHERING PLACE
- 142 THE CAN SHED

MASONVILLE

- 143 R PLACE

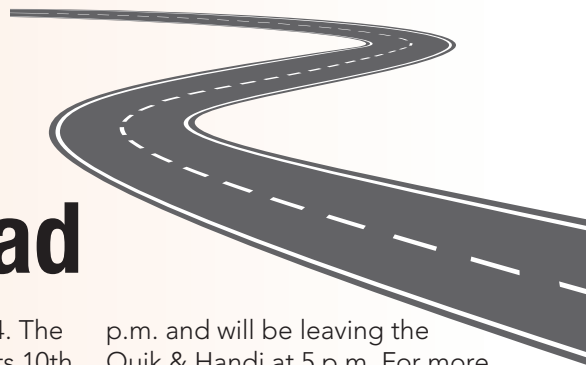


THIS PROJECT PAID FOR IN PART BY:
Delaware County Community Chest



Hello Summer

Car cruises ready to hit the road



Motorheads and admirers of mechanical works of art should make sure to mark their calendars as several car cruise dates have been announced.

The Country Cruisers will be hitting the pavement June 9 and Aug. 11 for their two Friday night car shows, in downtown Manchester starting at 5 p.m. These "Show and Shine" events include a 50/50 drawing, dash plaques and trophies awarded at 8 p.m. for several categories.

The Ryan Nationals Car Show will be held on Main Street in

Ryan on Saturday, June 24. The show will be celebrating its 10th year in 2023.

The event brings in 150-plus entries and over 400 spectators each year and takes place from noon to 4 p.m.

Just down the road in Earlville, the second annual Car and Motorcycle cruise is set to take place on Sunday, July 2. Registration will be held at Marshall's from 10-11 a.m. with the cruise taking off at 11 a.m.

On Saturday, Aug. 12, the car cruise will have a line-up at 3

p.m. and will be leaving the Quik & Handi at 5 p.m. For more information on any of these events, visit Country Cruisers Manchester on Facebook

On Oct. 1, Hot Rods & Harleys will once again return to the Main Street Square in Hopkinton (102 First St. SE), rain or shine.

Vehicle registration runs from 7-11 a.m. with show hours commencing from 11 a.m. to 4 p.m. and awards at 3 p.m. sharp.

For more information, visit www.hotrodsandharleyscarshow.com ■

Independence Day Celebrations

A variety of Independence Day celebrations are scheduled to light up the skies of Delaware County.



GETTY IMAGES

In Earlville, festivities will kick off July 4 with the 14th Annual Fireworks 5k and Little Firecracker Dash, Reg 7:30-8:30 a.m., Dash at 8:30 a.m. and 5k at

9 a.m. The annual Earlville Community Club's Fourth of July celebration activities will take place throughout the day, including a Car and

Motorcycle Show, Bean Bag Tournament, Cutest Baby Contest, Pickleball contest, 4 p.m. parade and other activities to be announced. Fireworks are set to begin at dusk.

Up-to-date information can be found on the Earlville Community Club's Facebook page.

The City of Colesburg is planning Independence Day activities for Saturday, July 1. There will be a Benefit Live Auction, refreshment stand and food available before the parade.

The parade will begin at 7 p.m. with fireworks at dusk. ■

STANLEY
Infrastructure

PALADIN
Heavy and Compact
Attachments



Visit our Job Listings on Indeed, ZipRecruiter or SnagAJob. EOE

Huskys release 2023 show, practice schedule

The famed and highly-decorated Hartwick Huskys are ready to return to the water, releasing its schedule for 2023. All shows and Learn to Ski clinics are family-friendly and free to the public. There are limited bleachers, so visitors are encouraged to bring chairs/blankets to sit on. ■



Photos:
www.hartwickhuskys.com

DATE	TIME	EVENT
Wednesday, June 14	6:30 p.m.	Home Show at Schram Park, Manchester
Wednesday, June 21	6:30 p.m.	Home Show at Schram Park, Manchester
Monday, June 26	6:00 p.m.	Learn to Ski at Smokeys/Lost Beach, Lake Delhi
Wednesday, June 28	6:30 p.m.	Lake Delhi Show at Smokeys/Lost Beach
Saturday, July 1	5:00 p.m.	Lake Delhi Show at Smokeys/Lost Beach
Wednesday, July 19	6:30 p.m.	Home Show at Schram Park, Manchester
Saturday, July 22	2:00 p.m.	Home Show at Schram Park, Manchester
Friday, July 28 -Sunday, July 30		2023 Midwest Regional Show Ski Tournament: Evansdale
Friday, August 11 -Sunday, August 13		2023 Division I Show Ski Nationals: Warsaw, Ind.
Wednesday, August 16	6:00 p.m.	Learn to Ski at Schram Park, Manchester
Saturday, August 19	5:00 p.m.	Final Show Jam at Schram at Schram Park, Manchester

SUMMER FUN STARTS HERE!

Campsites available!

- 8 Full hook sites
- Dump Station
- Flexible sites for group camping
- Close proximity to Manchester walking/bike trail
- 3 Playground sets and meeting room for camping groups

Delaware County Fairgrounds
 Manchester • 563-927-6449
www.delawarecofair.com
 1 mile from Manchester's Whitewater Park

Visit the Magic TRAVEL

Nicole Riley
VACATION PLANNER

319-373-8541 • Manchester, IA
Nicole@VisitTheMagic.com
www.visitthemagictravel.com

Your Full-Service Greenhouse

Geraniums - Vegetables Spring Flowers

- Trees & Shrubs
- Bird Baths & Figurines
- Stones
- Windchimes
- Memorials
- Cemetery Toppers

Open Year Round

Sue's Flower & Garden Center

Hours: Monday-Friday 9-5 PM, Saturday 9-4
 — Across from Oakland Cemetery
 Manchester, IA 563.927.6046



Hello Fall

FOR FUN IN THE FALL

Check out Sherman's Pumpkin Farm and Corn Maze

Story by Mike Putz

Looking for that perfect afternoon of family fun this fall? Sherman's Pumpkin Farm and Corn Maze in Manchester may be just the ticket.

This will be the 43rd year of pumpkins and festivities for Dean and Jackie Sherman, who began selling pumpkins from a truck some four decades ago while they both held full-time jobs.

The Shermans have a large variety of pumpkins for sale. In addition, there is a corn maze for visitors to experience. This year's corn maze theme is Cinderella.

Children may check out the wooden train, pirate ship and fire truck and there are always plenty of leaves piled up for kids to jump in and enjoy.

The pumpkin farm will open Saturday, Sept. 2 and will close Tuesday, Oct. 31. Pumpkin farm hours are 10 a.m. to 5 p.m. daily, while corn maze hours are 10 a.m. to 5 p.m. on weekends.



Pallets of pumpkins await visitors to the farm.

Special flashlight corn maze events will be held Saturday nights in October. Participants must be checked in by 8 p.m. for the flashlight nights.

"Trunk or Treat" is scheduled for Sunday, Oct. 29 from 2-4 p.m. The Shermans ask those attending to bring a non-perishable food item for the Delaware County Food Bank.

A visit to the pumpkin farm is

always free. The Shermans only charge for the pumpkins and for the corn maze. Admission to the corn maze is \$6, with ages four and under free. Free hayrack rides are available on weekend afternoons.

Dean Sherman said the pumpkin patch isn't typical of many patches. "We keep it simple — we don't charge admission to get in. We only

We shop around for your best price!

- Auto/Motorcycle/RV
- Business & Commercial
- Home Owners/Rental
- Crop & Farm



**COMMUNITY
INSURANCE
OF IOWA**



See —

James Rochford, Agent
Brandon Mather, Agent
103 N. Washington, Edgewood, IA
563-928-6841

adno=32851

Delaware County Conservation

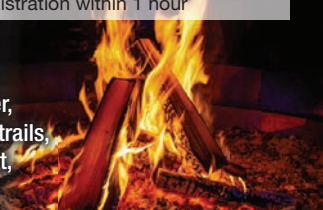


Delaware County Campgrounds:

- Baileys Ford Park
- Turtle Creek Park
- Coffins Grove Park
- Twin Bridges Park

Self-registration within 1 hour

Amenities available:
water and electric hook-ups,
shower house, dump station, river,
lake and trout stream fishing, hiking trails,
picnic shelters, playgrounds, boat,
canoe and kayak river access.



Visit our website at:
delawarecounty.iowa.gov/conservation

adno=328064

charge for the pumpkins and produce you buy and for the corn maze."

"Our place is family-oriented," Jackie Sherman said. "We want families to come and relax and have a good time. That's what it's all about."

Pallets of pumpkins greet visitors, allowing them to pick their pumpkins from a pile or wagon. Each pile of pumpkins is priced by size.

"I always try to do that with the family aspect in mind," Jackie Sherman explained. "That lets parents know exactly what they can afford when they come and see the piles of pumpkins."

Dean Sherman said he never envisioned the success and growth they would find over the years when they began 43 years ago. And it appears that he and his wife enjoy their visitors to the farm as much as the visitors enjoy coming.

"This has been an amazing journey," Dean Sherman said. "We are just humbled to be part of the community. My heart sings when I see the cars pull



Dean and Jackie Sherman are the hosts of Sherman's Pumpkin Farm and Corn Maze.

in and the kids pile out of the cars and run and play. There are no lines and no restrictions and it's safe. If we didn't do this, our life would be a lot smaller than it is. We enjoy all the people that come every year."

Sherman's Pumpkin Farm and Corn

Maze is located at 413 S Wayne St. in Manchester.

Special appointments, as well as group tours, may be arranged by calling 563-920-2742. ■

mike.putz@wcinet.com

SHERMAN'S 2023 PUMPKIN FARM & CORN MAZE

Saturday, September 2nd
thru Tuesday, October 31st

PUMPKIN FARM OPEN DAILY:
HOURS: 10:00 AM - 5:00 PM

Free Admission to the Pumpkin Farm
Tours available by appointment

2023 Corn Maze: "Cinderella"

Corn Maze open Weekends

10:00 AM - 5:00 PM or by appointment.

Corn Maze Admission Fee: \$6.00
(4 years & under - No charge)

*Flashlight Corn Maze: Saturday nights in October

2023- TRUNK-TRICK-OR-TREAT

Sunday, October 29, 2023

2:00 PM - 4:00 PM

(Please bring a non-perishable food item to donate to the Delaware County Food Pantry)

Dean & Jackie Sherman

Sherman's Pumpkin Farm, LLC

413 S. Wayne St., Manchester, IA 52057
563-920-2742 or 563-920-2732



STYLE THAT SPEAKS.

Nothing says Beauty, Quality and Durability
like a Midland Garage Door.



**Delhi
Lumber**

563-922-2404
330 Franklin St., Delhi, IA



adno-328061



Hello Winter

Enjoy a drive through the holiday light show



DAVE LABELLE • STAFF PHOTOS

Jingle Bright Holiday Lights illuminate the Delaware County Fairgrounds on Friday and Saturday nights throughout the month of December.



MANCHESTER CHIROPRACTIC CLINIC

Hours:

Monday	8am-Noon & 2pm-6pm
Tuesday	7am-Noon
Wednesday	2pm-7pm
Friday	7am-2pm

953 E. Main St.
Manchester
(563) 927-5327

Specializing in Gonstead Technique



Dr. Jason Nolz

Subscribe & Save!

Manchester Press



Sports

West Delaware Dominates Iowa wrestling

Wins traditional title

Read Online Now 24/7 at www.manchesterpress.com

Subscribe and get both print and online at one low price!

Call 563-927-2020

F&M BANK

"The Right Choice"

101 East Main St.
Manchester • 563-927-4475

www.fmbank.biz



adno=328072



ADVANCED EYECARE

Comprehensive Eye Care
Contact Lens Care
Medical Eye Care
Full Service Optical
Surgical Co-Management
Emergency Eye Care

- Dr. Beth Zingula, OD
- Dr. Shawn Beilby, OD
- Dr. Nicholas Olberding, OD

HOURS:

Mon- 8:15-5:00
Tue- 8:15-6:30
Wed- 8:15-5:00
Thr- 8:15-5:00
Fri- 8:15-1:00
Sat- By Appointment
Sun- closed



ADVANCED EYECARE ASSOCIATES

OF EASTERN IOWA, PC

225 W. Main St., Manchester, IA 52057
563-927-3759

www.advancedeyecareassociates.com

adno=328086



PROVIDING INSURANCE
& FINANCIAL SERVICES



Julie Smith, Agent

563-927-3098

julie@juliesmith.net

www.juliesmith.net

1212 W. Main, Manchester, Iowa 52057

AUTO • HOME • COMMERCIAL
LIFE • HEALTH

State Farm Insurance Companies
Home Offices: Bloomington, Illinois

adno=328075

WULFEKUHLE ELECTRIC



QUALITY
ELECTRICAL
SERVICES
AT A
COMPETITIVE
RATE!

- Residential
- New Construction
- Remodeling
- Design Build
- LED Lighting Retrofit
- Grain Handling Motors & Systems
- Generator Sales & Installation
- Agricultural
- Trenching
- Commercial & Industrial
- Energy Management & Storage
- Renewable Energy Solar & Wind Install Systems



Licensed | Bonded | Insured
208 Lexington St., Delhi, IA
Contact us today!

563.608.6033

Learn more at wulfekuhleelectric.com

adno=328088



For all seasons

FRESH, NEVER FROZEN QUALITY

Delhi market prides itself on excellence

Story by **Daniel Charland**



DANIEL CHARLAND • STAFF PHOTO

Multiple displays of fresh prime cuts in Off the Hoofs display window.

It's not uncommon for people to drive for hours to visit Delhi meat market Off the Hoof, which prides itself on having the best-tasting meat for miles with its "Fresh, never Frozen" business style.

Originally a Kentucky-based business founded in Mayfield in 2012, it opened its first location in Iowa in March 2022. The store specializes in Black Angus beef, all locally grown.

"There is a difference between fresh and frozen," said Lori Tucker, store manager. "It's what sets us apart from most other places you might shop at. Our meat comes fresh in boxes. We have our own meat cutter here who cuts, packages and puts it in the display case. We only buy the top-end beef, so it's the highest quality available, premium and choice-cuts only."

While Off the Hoof is open year-round, its biggest time of

year is the summer grilling and boating season. For grilling, they provide fresh cuts of meat as well as whole loins for people who enjoy smoking their own meats or grilling an entire brisket, butt roast or rack of ribs, which Tucker said seems to be a recent trend. They also sell accompaniments to whatever is being put on the grill, such as side salads, appetizers and homemade dips.

For boating season, they sell snacks and drinks commonly taken on pontoon rides like pop, beer, chips, buns, crackers, fresh-sliced meats and cheeses. During the summer they often carry stuffed mushrooms or jalapeno peppers, although the specific stock items often rotate. In the winter, sales include crock pot roasts and meat box specials.

According to Tucker, new faces from out-of-town visitors are just as common as local customers, with some stopping by on trips from out-of-state and others

making Off the Hoof their primary destination from as far as Des Moines. Many visitors also take advantage of their dine-in option to enjoy their popular lunches and sandwiches.

"Every single day, we have people who come in who say, 'we heard about your store, we didn't know you were here,' or 'we never drove through here in the day' because a lot of people come to the landing at night when we're closed. Often, we'll ask the customers where they're from if we don't recognize them and it's amazing how they come from all around us and way-off places who came here just for lunch and to pick up a few things. It's wonderful.

"We're really looking forward to the summer and think we'll be as busy as can be."

For more information, visit <https://www.offthehoofdelhi.com>. ■

daniel.charland@wcinet.com
www.delawarecountyiowatourism.com

Delaware County Historical Museum

College Square on Highway 38, Hopkinton

563-926-2639



*This nine-building complex, formerly
Lenox College, is listed on the
National Register of Historic Places.
It includes numerous exhibits plus:*

- Civil War Monument
- College Buildings & Memorabilia
- Turn of the Century Architecture
- Landscaped Campus
- Farm-Buildings
- One-Room School
- Restored Train Depot/Caboose
- Restored R.P. Church
- Drug Store Display
- Natural History Display



Part of Iowa Scenic
Byways trail
- Delaware Crossing

Hours: June thru September
Tues. - Sun. 1-4 p.m.
or by appointment.

Admission: \$5.00

AVAILABLE FOR
WEDDINGS, REUNIONS
& OTHER EVENTS!

Call Us Today!

For Events & Updates Follow Us on
Facebook at:
Delaware County Historical Museum



adno=328077

**Open Daily:
Monday thru Sunday at 10am**

Hot Food to Yummy Ice Cream



**Burgers, Baskets,
Chicken Strips, Salads &
Ice Cream Treats!**



Dairy Queen

1209 W. Main, Manchester
(563) 927-8181

adno=328078

Live. Work. Play



MANCHESTER

www.manchesteriowa.org

Visit our website for information on
Attractions, Shopping & Events.



adno=328083

200 E Main St. • Manchester IA



For all seasons

Vacation rentals a fun option throughout Delaware County

Story by **Mike Putz**

For those needing a longer stay or just wanting more room and privacy for a shorter stay, Delaware County has the following vacation rentals:



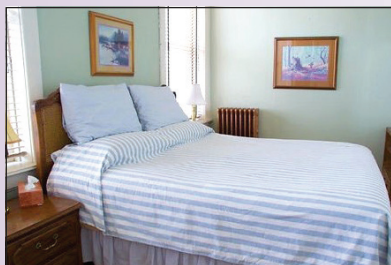
Sip and Dream

Sip and Dream is a popular, four-bedroom, short-term vacation rental that helps serve Delaware county vacationers, family and friends here for funerals or weddings, various traveling medical staff, or even short-term contractors here for three months or more. Constructed in the early 1900s, this spacious home sleeps eight and has vintage charm as well as all modern amenities and luxuries.

Managed by a veteran host, everything you can think of needing is at your fingertips. Located in the heart of downtown Manchester, you will find yourself only blocks away from the White Water Park, Riverbend Bar & Grill with outdoor seating overlooking the river, Franklin Street Brewery, several boutiques and diners and Aunt Emmy's Coffee House and Sweetery. Ranked all five stars with over 20 reviews, Sip and Dream can be found on Airbnb, Vrbo or if longer stays direct bookings can be made through Abby at Buesing and Sons Rentals, LLC. Come

check out all there is to love in Manchester.

Contact Abby Buesing, (319) 361-9222, Buesingabby@gmail.com, Facebook: <https://www.facebook.com/profile>.



Café Rose' Guests Suites

Café' Rose' Guest Suites

provides a cozy and comfortable home-away-from-home for Iowa visitors, a weekend escape, or a convenient overnight location for out-of-town families. Located on the main floor and the upper level of a turn-of-the-century bank in downtown Edgewood, guests enjoy the casual and friendly atmosphere.

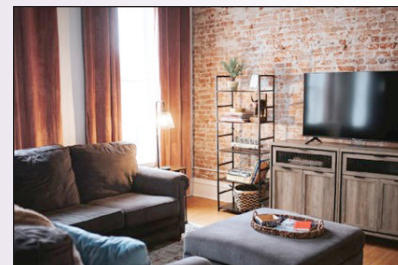
Delaware Suite (2 room) The Delaware Suite a two-room suite which include a king-sized bed, a queen-size sleeper sofa and private bathroom with shower.

Madison Street Studio (1 room) Madison Street Studio features a king-sized bed located on the main level of the building with a private bathroom and shower. This room is perfect for those seeking an easily accessible, convenient and efficient space.

Clayton Suite (4 room) This suite features two bedrooms, one with a queen-size bed and one with a full-size bed. There is

a private bathroom with a tub/shower, dining room, kitchen, double sink, full-size refrigerator, range, microwave, Satellite TV, DVD player and wireless internet. It also includes a second-story deck with outdoor furniture and a gas grill.

For reservations, contact Rose Totman at (563) 928-6908.



The Coffee Loft

The Coffee Loft, built in the late 1800s, is a recently renovated apartment above Aunt Emmy's Coffee House & Sweetery in downtown Manchester.

They brought back charm and character from its creation — exposing brick, the original tin ceiling, hardwood floors and vintage decor, including many local pictures and newspaper events from the early 1900s.

Rental includes two bedrooms (king in master and queen in second bedroom), full bath including laundry, fully furnished apartment close to all local amenities; shopping, eateries, white water park, brewery, etc. So much to do within walking distance.

For reservations, email: emily@auntemmys.com or visit AirBNB: <https://www.airbnb.com/h/thecoffeeloft>

Stay and play in Delaware County!



Cabin in the Woods

Come and enjoy this one-of-a-kind, rustic log cabin. You'll be greeted by a welcoming covered porch that takes you to your own private retreat. The cabin includes a full kitchen, two full baths and two bedrooms. You'll have full access to the 17 acres of timber surrounding the cabin. Outside you'll find walking trails, a fire pit, charcoal grill, all within the relaxing peacefulness of Mother Nature.

For things to do in the area, the Field of Dreams is only a 19-minute drive away. In the towns of Dyersville (12-minute drive) and Manchester (14-minute drive), you'll find local small-town businesses and boutiques for shopping, coffee shops and restaurants. The city of Dubuque is a 38-minute drive away, where you can enjoy the bustling downtown with lots of bars and restaurants, local culture, museums and galleries. Outdoor enthusiasts, can enjoy the area's natural beauty with a hike or bike ride through one of the many trails and parks, or a walk along the Mississippi River.

For reservations, contact Micky Wagner by texting 563-543-2764. Located at 2831 210th St., Earlville, Iowa, 52041. Vist Airbnb: https://www.airbnb.com/rooms/39697614?check_in=2023-03-01&check_out=2023-03-06&guests=1&adults=2&s=67&unique_share_id=1442a2ed-c7b4-48f7-bb5d-f0e68b139958



Lakeview Living

Lakeview Living Vacation Rentals, located in Delhi, is a large, luxury all-season vacation home rental overlooking Silver Lake, complete with five bedrooms, plus a bonus bunkroom within a main bedroom, as well as five bathrooms, two laundry rooms, two living rooms, two kitchens and a kitchenette, accommodating up to 26 guests — complete with a game-room and a private beach for only the guests staying in the home.

Also, part of Lakeview Living are four-seasonal rental campers at the neighboring campground, within walking distance of Lakeview Living Vacation Home. Four different rental campers can suit your camping needs,

sleeping two-to-six depending on the camper. These rental campers are all equipped with decks and outdoor furniture, fire pits and dishes/cookware, so you can "glamp" while enjoying many of your home amenities such as heat and A/C, beds, bathroom and kitchen.

All of the Lakeview Living Rental Campers are located near each other for group camping. Whether you are in town for the Field of Dreams baseball activities, the Delaware County Fair, the Great Jones County Fair, the Dubuque County Fair, boating on Lake Delhi, ice skating and ice fishing on Silver Lake, trail hiking at Backbone Park, whitewater rafting at the Manchester White Water Park, visiting St. Francis Xavier Basilica in Dyersville, running or biking on the Heritage Trail or going to the National Farm Museum and need a short term vacation rental, please contact them to check availability.

They also accommodate larger groups for weddings, anniversaries, family/friend reunions and holidays. View all of the rental options at www.lakeviewlivingrentals.com, our Facebook page at www.facebook.com/lakeviewlivingdelhi, email us at lakeviewlivingrentals@gmail.com or call Jennifer, the Lakeview Living property manager at (319) 480-7680. ■

mike.putz@wcinet.com





EXPANDING FINANCIAL HORIZONS
Member FDIC

300 East Main Street, Manchester
gnbbank.com



adho-328079



Listen online at www.kmch.com

- **Music**
- **News**
- **Weather**
- **Sports**
- **Markets**

adho-328069



For all seasons

Bushel & A Peck: A busy little store!

Story by Mike Putz

With an outside looking a bit like a gingerbread house and the inside atmosphere of a general store, Bushel & A Peck is a place that attracts a lot of visitors looking for Iowa-made products and seasonal décor.



Owner Dave Reiss and his late wife Kendy purchased the store in March 2018. Reiss said customers can always count

on fresh baked goods, fresh produce and Iowa-made products.

"It's a busy little store, but it's also a fun little place — we meet a lot of people," he said.

Reiss said some of the best-selling items include Edgewood Meats from the Edgewood Locker, Hansen Dairy Products and homemade pies and baked goods. "We also sell a lot of homemade frozen dinners," he added.

In addition to the baked goods made fresh daily, Reiss said the line of gifts and décor are also

popular sellers. Customers may find a gift for any occasion or find items that are seasonal.

Reiss said he's busiest from Easter to the end of the year.

"Once Easter hits, it really takes off because we have strawberries. Then we get peaches, watermelons and sweet corn. Then it's pumpkins and Christmas trees."

Bushel & A Peck is open six days a week – Monday through Friday 7 a.m. to 5:30 p.m. and Saturday 7 a.m. to 5 p.m.

Reiss said it's not unusual for people to be drawn into the store by the look of the building. "A lot of out-of-town people will stop just because of that. But a lot of them become return customers."

The Manchester Farmers Market is located directly behind Reiss' store and he sees additional business on those days.

"It's good for everybody. It ties in really well. And the setting of the market along the river is very nice. It really is a good thing."



MIKE PUTZ • STAFF PHOTO

Dave Reiss offers a variety of Iowa-made products in his store.

Reiss said he didn't know what to expect when he purchased the store in 2018. "The Lord has blessed us very well. He answered my prayers." ■

mike.putz@wcinet.com



We are makers of all things beautiful!

Functional Pottery, 100% Soy Candles, Mercantile - Car Freshies
- Room Sprays - Soaps, Wine (Wine tasting bar)
Woodcraft items, laser engraving.

All items in store are Iowa-Made.

Open Thursdays - Saturdays

201 Spring Street Dundee • 563-924-2821

See us on [f](#) • website: lowamakers.store

adno=326947

HANDKE

PUMP SERVICE

Serving Northeast Iowa for all your water well needs

James Handke

563-245-1698 563-880-3332

<https://handkepumpservice.com/>

adno=328442

TOUR KENDRICK, INC.

KENDRICK FOREST PRODUCTS • FOREVER CABINETS BY KENDRICK • THE MARKKET • KENDRICK HOME • SHIMLEE



WOOD YOU LIKE TO TAKE A TOUR!?

Tour Iowa's Largest Sawmill, A Custom Cabinet Shop, A Wood Sign Printing and Manufacturing Facility And An Award Winning Retail Destination All Located In Edgewood, Iowa!

Available Tour Times: Tuesdays And Thursdays At 11:30 A.M.
Call 563-928-6431 or Email tours@kendrickinc.com To Schedule Yours!

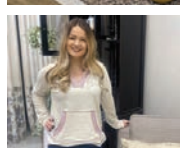
adno-325984

TOURS START AT KENDRICK FOREST PRODUCTS

AND END AT OUR RETAIL DESTINATION!

THE MARKKET

HOME DECOR • GIFTS • CLOTHING • LIGHTING • RUGS • WALL ART • CUSTOM CABINET DISPLAYS



200 N. LOCUST ST. EDGEWOOD, IA • 563-928-6432 • WWW.THEMARKKET.COM
M-F 9 A.M. - 5 P.M. • SAT. 9 A.M. - 4 P.M. • SUN. 10 A.M. - 3 P.M.

2023

EDGEWOOD

★ PRO RODEO DAYS ★

JUNE 22, 23, 24, 25



adno=329078